

St Petersburg Yacht Club

2019 America's Disabled/Open Regatta

December 5-8, 2019

SAILING INSTRUCTIONS

1. ORGANIZING AUTHORITY

This regatta is organized by the St Petersburg Yacht Club.

2. RULES

1.1 The regatta will be governed by the current ***Racing Rules of Sailing (RRS)***. If there is a conflict between the Sailing Instructions and any other document governing the event, the Sailing Instructions will take precedence. This changes RRS 63.7.

1.2 SPYC reserves the right to change the Notice of Race. Any changes will be posted on the Notice Board on yachtscoring.com.

1.3 This is an International Sonar Class Association (ISCA) Appendix B – Alternative Rules event.

1.4 Advertising will be governed by ISAF Regulation 20 Advertising Code.

3. NOTICES TO COMPETITORS

Notices to competitors will be posted on the Regatta Notice Board on the regatta page on yachtscoring.com. The **official** notice board will be at the St. Petersburg Sailing Center (SPSC).

4. CHANGES IN SAILING INSTRUCTIONS

Any change to the Sailing Instructions will be posted before 0800 on the day it will take effect, except that any change to the schedule of races will be posted by 1700 on the day before it is to take effect.

5. SIGNALS MADE ASHORE

5.1 Signals made ashore will be displayed from the St. Petersburg Sailing Center flagstaff.

5.2 If a postponement is signaled ashore, the warning signal will be made not less than 30 minutes after the after the AP is lowered. This changes Race Signals AP.

6. SCHEDULE OF RACING

Eight Races are scheduled; however, no more than three races shall be sailed on any race day.

Thursday, December 5	1600 – 1800	Competitor Check-In	SPYC
Friday, December 6	0900	Competitors' Meeting	SPSC
Friday, December 6	1030	Warning Signal, Racing Begins	
Saturday, December 7	1000	Warning Signal, Racing Continues	
Sunday, December 8	1000	Warning Signal, Racing Continues	
Sunday, December 8	ASAP	Awards Presentation	SPYC

6.1 No warning signal will be made after 1400, Sunday, December 8.

6.2 Three (3) races will constitute a regatta.

7 CLASS FLAGS AND SPECIAL SIGNALS

7.1 The following class flag shall be used for each class.

a) pink flag - 2.4mR class

b) Sonar flag - Sonar class

7.2 The display of flag R (a yellow cross on a red field) at the finish of any race means: Another race will follow.

8. RACING AREA

Races will be held on Tampa Bay, Florida, with the starting area approximately 2 nautical miles E to ESE of the St. Petersburg Central Yacht Basin entrance.

9. THE COURSES

9.1 The Sonar Class and the 2.4mR Class will share a common start line, finish line, and leeward mark. **Each class will have a separate windward mark.**

9.2 One or more course boards will be displayed on the signal boat, each of which will display the following information: CLASS, approximate magnetic DIRECTION to weather mark, and approximate DISTANCE to the weather mark in nautical miles from the signal boat, in that order. DIRECTION may be displayed on a separate course board. Course board information may be changed anytime before the warning signal for a class.

9.3 The Race Committee may shorten the course at a mark of the course, but not to less than 3 legs for any course.

9.4 The ATTACHED COURSE DIAGRAM describes the course configuration for each class, the order in which marks are to be rounded or passed, and the side on which each mark is to be left.

10. MARKS

The start/finish line mark will be a small yellow tetrahedron. The leeward mark will be a large orange sphere. The 2.4mR windward mark will be a large yellow tetrahedron and the 2.4mR windward change mark will be a large yellow cylinder. The Sonar windward mark will be a large orange sphere and the Sonar windward change mark will be a large green tetrahedron.

11. CHECKING IN

Each boat shall check in at the Race Committee signal boat before the first race of each day by sailing on starboard tack past the stern of the Race Committee signal boat prior to the preparatory signal. Only the race committee may protest alleged breaches of this sailing instruction. The penalty for breaking this instruction shall be a 20% scoring penalty, but not less than 1 point or more than the points for DSQ, calculated in accordance with RRS 44.3. This changes RRS 60.1 and 60.3.

12. THE START

- 12.1 Classes may be started in any order.
- 12.2 A separate start will be provided each class in each race.
- 12.3 The starting line will be between the staff displaying an orange flag on the race committee signal boat at the starboard end and the course side of the starting mark at the port end.
- 12.4 Boats failing to start within four (4) minutes of their starting signal will be scored DNS without a hearing. This changes RRS A4.1, A5 and 63.1.

13. CHANGES OF COURSE AFTER THE START

To change the next leg of the course, the race committee will lay a new mark and remove the original mark as soon as practicable. When in a subsequent change a new mark is replaced, it will be replaced by an original mark.

14. THE FINISH

The finishing line will be between a staff displaying an orange flag on a Race Committee boat and the course side of the finishing mark.

15. PENALTY SYSTEM

Penalties, if any, will be imposed pursuant to RRS 44.

16. TIME LIMIT

- 16.1 The time limit for the first boat to sail the course and finish is 1 hour.
- 16.2 Boats finishing more than 30 minutes after the first boat to finish will be scored DNF without a hearing. This changes RRS 35 and A4, A5 and 63.1.

17. PROTESTS

- 17.1 RRS 61.1 is changed by adding the requirement for a boat intending to protest to notify the Race Committee finish boat of the sail number(s) of the boats(s) she is intending to protest.
- 17.2 Protest forms are available at the St Petersburg Sailing Center. Protests shall be

delivered to the Protest Committee representative there within the protest time.

17.3 Protest time will begin at the time the Race Committee finish boat docks, and end ONE hour later. Docking time will be posted on the Official Notice Board. This changes RRS 61.3.

17.4 Protest notices will be posted within 15 minutes of the protest time limit to inform competitors where and when there is a hearing in which they are parties or witnesses.

17.5 A request for redress shall be delivered to a protest committee representative within one hour of the race committee finish boat posted docking time OR WITHIN ONE HOUR OF THE POSTING OF THE RACE COMMITTEE ACTION FORM, WHICHEVER TIME IS LATER. This changes RRS 62.2.

17.6 The US Sailing Prescription to RRS 63.2 is deleted. The Protest Committee will NOT attempt to notify all boats of a redress hearing.

17.7 On the last day of racing, a request to reopen a hearing shall be delivered:

(a) within the protest time limit if the party requesting reopening was informed of the decision on the previous day; or,

(b) no later than 30 minutes after the party requesting reopening was informed of the decision on that day. This changes rule 66.

18. SCORING

18.1 The Low Point Scoring System, Appendix A of the RRS, as changed below, will apply.

18.2 When fewer than five (5) races have been completed in a series, a boat's series score shall be the sum of her score for all races.

19. SAFETY

19.1 A boat retiring from a race shall, when possible, notify a race committee boat before leaving the racing area. When that is not possible, she shall notify a staff member at the SPSC as soon as she arrives there.

19.2 All competitors shall wear personal flotation devices ((PFDs) which are either approved by the United States Coast Guard, or, in the case of foreign competitors, approved by their sponsoring country. All PFDs shall be in good condition and WORN AT ALL TIMES WHILE AFLOAT except that they may be removed briefly, when not racing, for the purpose of adjusting, adding or removing clothing.

20. ELECTRONIC COMMUNICATIONS

20.1 Boats shall neither make nor receive electronic communications while racing. This restriction includes mobile telephones. The Race Committee will use **VHF channel 68** for safety and race committee coordination. This frequency will be constantly monitored by all race committee vessels, in addition to the Safety Coordinator stationed at the Sailing Center, throughout the duration of all races.

20.2 Sailors are advised to carry a VHF radio and may use it on the designated VHF channel to receive official communications regarding the safety of the fleet, or to make transmissions calling for assistance.

20.3 A GPS tracking device may be carried. The device shall remain sealed at all times from the time that a boat leaves the dock until it returns. Data provided by the device is not admissible as evidence in a Protest or Redress hearing.

21. PRIZES

Trophies shall be awarded at the St. Petersburg Yacht Club after racing at approximately 1600 on Sunday.

22. DISCLAIMER OF LIABILITY

Competitors participate in the regatta entirely at their own risk. See RRS 4, Decision to Race. The organizing authority will not accept any liability for material damage or personal injury or death sustained in conjunction with or prior to, during, or after the regatta. If there is any conflict between these Sailing Instructions and the Disclaimer or Waiver of liability of the Organizing Authority, the Race Committee and any other beneficiary of the Disclaimer or Waiver of liability signed by any participant as a condition of participating in this Regatta, the language of the Disclaimer or Waiver of liability shall take precedence.

23. CODE OF CONDUCT

23.1 Coach and other support boats and personnel shall not interfere with the racing or the conduct of the regatta, and shall comply with any reasonable request from an official. Such request may include rendering assistance to a boat in danger.

23.2 If the protest committee receives a report alleging a breach of paragraph 23.1 above, it may conduct a hearing in accordance with RRS 63. Any competitors associated with the support personnel shall be made parties to that hearing.

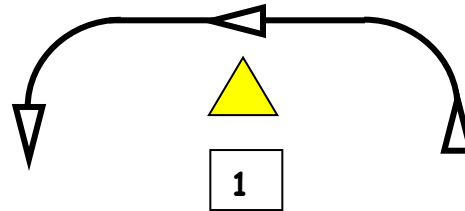
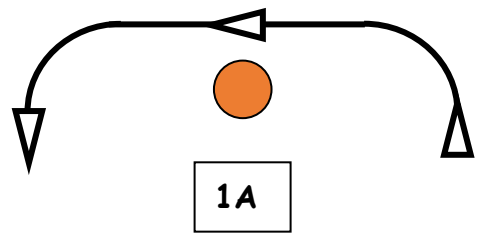
23.3 A breach of paragraph 23.1 above may result in a points penalty applied at the discretion of the protest committee to any competitors associated with the support personnel.

Gina Bowden-Pierce,

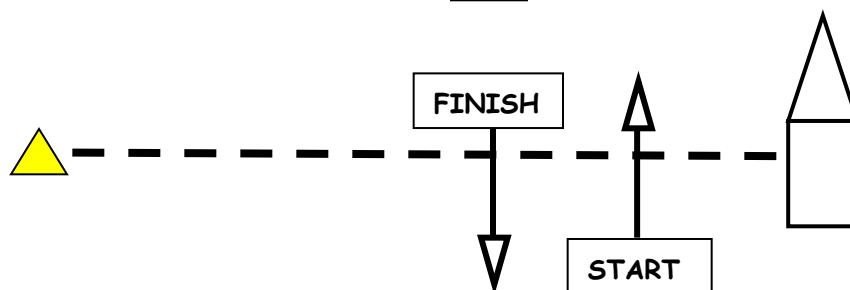
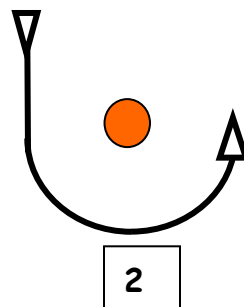
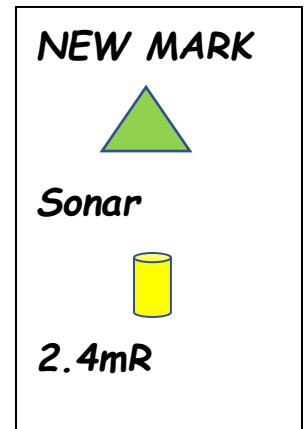
PRO, November 22, 2019

COURSE DIAGRAM IS ON PAGE 6

WINDWARD-LEEWARD COURSE DIAGRAM



NOT TO SCALE



Sonar COURSE 4: START-1A(port)-2(port)-1A(port)-FINISH

2.4mR COURSE 4: START-1(port)-2(port)-1(port)-FINISH

Sonar COURSE 6: START-1A(port)-2(port)-1A(port)-2(port)-1A(port)-FINISH

2.4mR COURSE 6: START-1(port)-2(port)-1(port)-2(port)-1(port)-FINISH